



~Tails & Trails~

APRIL 2011



From the President's Saddlebag



Hi All,

The Chainsaw Clinic at Bob Funk's home was attended by ten or so people. There were both men and women and some of us that have used saws for a long time picked up a lot of interesting information. Information concerning care and maintenance that will keep us out of the repair shops if we practice them. Thanks Bob for a great lesson session.

The meeting was well attended and some good chili and cornbread and dessert was eaten all that wanted it. Karen gave a good report on the state meeting. We had some new people take membership information.

The next big thing is the Tune-Up Clinic at Red Top Stables. Please call or e-mail me with your shot requirements. Drs. McKinley and Peters need to know how many vaccines to bring.



If I can't put water wings on my horse it may be June before we can ride out around here. But, life is good. Let's at least get our gear in shape so we can ride when the monsoon quits.

Boots and Saddles, Spring is coming, Lets Ride ~ Bob



APRIL EVENTS



9th – Saturday
Tune-Up Clinic

Trail Boss Bob Williams – 509-280-7796

RSVP by Monday, April 4th

16th – Saturday – Regular Meeting
Socializing 6:30 • Meeting 7:00

Non-PBCH Events

11th – Monday
America's Favorite
Trail Horse Auditions
Red Top Stables
Post Falls, ID

15th - 17th – Friday – Sunday
Idaho Horse Expo April
Idaho Horse Park
Nampa, ID

30th – Saturday
Cenex Treasure Hunt
Farragut Park
8:30AM Start

PANHANDLE BACK COUNTRY HORSEMEN MARCH 19, 2011 MINUTES

President Bob Williams called the meeting to order at 6:55PM

Guests: Mike Young and Diane Robson

Dispensed with the reading of the February minutes as the secretary was out.

STATE BoD MEETING - Karen Kimball reported that the BCHA volunteer hours were approximately 7 million. Out of the 21 million hours put into trail work, this makes BCH the largest single volunteer group in the nation. ID had 382,000 hours with 51,836 coming from PBCH. •This year the state gave back 25% of the calendar sales to the chapters, we had 200 calendars equaling \$4000, so we receive a check of \$1000. We will promote calendars at our events, like the Sept clinic. 2 of the chapters returned their checks to the state.

•Overall state membership is down a bit. •The July BoD's meeting will be done via video conferencing at various sites of ID University, costing \$25/hr/site. The northern chapters will meet in CDA and the total costs will be spread out among the 15 chapters. •The state's 2 national directors will go to the BCHA annual meeting in MT. As the national organization is struggling, the state voted to donate \$1000 and will help in looking for sponsors. •The Idaho Horse Council abandoned their support of the NAIS chipping and registration proposal. •There will be a couple going to the Master LNT Clinic in MT. The state already voted to pay the \$650 fee for one person and Squaw Butte is paying for the other person. This couple will go around the state and do trainings for the chapters. •The Trail Classification process of seeing that horse trails are designated and maintained to stock standards is the MOST IMPORTANT thing that BCHA, BCHI and PBCH have to do. Bob Williams stressed that when we meet with the FS, if they tell us trails are maintained to horse standards, but not marked as such, the won't be. BCH has won the lawsuit and the FS has to mark the trails for stock. •The ID Parks & Rec dropped the horse symbol off their Trail Map web site and BCHI is going to work on getting those symbols back on. •Thing are going well for the Packing Clinic in August. It's \$600 for the week in the Sawtooth Wilderness. •New state officers are Mark Bogar as Chair and Karen Kimball as Vice Chair.

Bob Williams received info on the NineMile Training Center courses, Gentleman on Horseback Ride on June 12th and the Inland Empire BCH Poker Ride May 14th. These will be posted in the newsletter.

REMOUNT RIDE May 7th & 8th - is being hosted by the Shriners.

HOUSE BILL 191 - Jerry Shriner reported that this bill that would allow the ID race tracks to offer off-site simulcasting with wagering, passed the State Affairs Committee, will move on to the House floor for further debate.

TUNE-UP CLINIC - April 9th - Bob Williams Trail Boss. Sign up sheet is going around. Location: Red Top Stables, 11875 W Manitoba Court, Post Falls, ID 83854 (208) 777-7958. On Idaho Rd in Post Falls, go 1/4 mile North of Hayden Ave, there will be a Red Top Arena sign on the left, turn on Manitoba and drive on a dirt road about 1/4 mile to arena.

Idaho Horse Expo April 15 - 17. Flyer will be in the newsletter

RFDTV is having America's Favorite Trail Horse Auditions Monday, April 11th at Red Top Stables. More info can be found at www.ACTHA.us. Flyer will be in newsletter.

E-MAILS RECEIVED - What is the FS going to do with the funds that were not used on fire suppression and we need to let congress know to keep the funds with the FS. •Senate Bill HR 1, which was another version of the HR 191 bill. Even though these bills concern Horse Racing, they will affect all horse activities. Both of these items were given to Jerry Shriner to research. •Trail Blazer magazine has sent a request for articles on trail work and trail warriors. •WA State has in committee a bill to create a parking stamp of \$30/vehicle to park on public lands. •The horse care bill requiring shelters for each animal is still in committee. •Sharon and Gene Bruce sold their house and the PBCH stuff, i.e. the trailer has been moved to Karen Kimball's house. The license expires the end of March. Karen Kimball made a motion to update the license and registration, Diane Shriner 2nd, motion passed.

FUNDRAISE - Events will include Trail Obstacles, LNT, Packing Clinic, De-spooking Clinic, Trail Ride, Horse 1st Aid, Trailer/Break Inspections and Mounted Shooting Demo. Lea Williams ask people to let her know where you go for donations for the gift baskets silent auction. Bob Williams - Indiana Harness, Diane Shriner-D&B Farm and Feed, Marilyn Rousher- Idaho Independent Bank, Diane Robson-Hickman Saddlery and American Blazer Horse Association, Sandy Beamer-Carter Country Store and Joyce & Angie Bissell-Wells Fargo, St Maries. Karen will make up a letters for us to give to donors and have Debbie Samovar e-mail to the membership ASAP.

EVENTS - Dates and Trail Bosses have been set for the following:

- March 26 - Postponed due to weather
- May TBD - Marie Creek Trail Clearing - Les Erickson
- May 7 - Remount Ride - Jerry & Diane Shriner
- June 4th - Nat Trail Day work party- Hitching rail @ English Pt, Karen has the donated metal
- June 25 - 4th of July Pass Fun Ride - Joni Lueck - lunch \$4
- July 16 - Red Ives Work Project - Karen Kimball
- Aug TBD - Hay hauling into Mallard-Larkins for Tracy Gravelle/FS
- Oct 5th - Lutheran Haven Packing Demo - Bob Williams, needs helpers

Karen Kimball made a motion to update our horse 1st aid kit, 2nd by Sandy Beamer, motion passed.

There was no drawing for the Progressive Pot.

There were 26 members present.

Meeting adorned at 8:30

Respectfully Submitted,
Diane Shriner

[Please visit these IMPORTANT LINKS on our website.](#)

Trail Classification System

http://www.backcountryhorse.com/Trail_Classification_Assistance_Program.html

2011 Wilderness Pack Clinic

<http://www.wildernesspackclinic.org/>

March 2011 State BoD Meeting

<http://www.bchi.org/documents/2011-mar-BODmtg.pdf>



2011 EVENTS



▶ PBCH Events ▶ [Regular Meeting](#) ▶ [TRAIL BOSS NEEDED](#) ▶ [RSVP](#) ▶ Non-PBCH Events

APRIL

9th – Saturday
Tune-Up Clinic
 Trail Boss Bob Williams – 509-280-7796
RSVP by Monday, April 4th

11th – Monday
 America's Favorite Trail Horse Auditions
 Red Top Stables, Post Falls, ID

15th - 17th – Friday & Sunday
 Idaho Horse Expo April
 Idaho Horse Park, Nampa, ID

16th – Saturday – Regular Meeting
Socializing 6:30 • Meeting 7:00

30th – Saturday
 Cenex Treasure Hunt
 Farragut Park • 8:30AM Start

MAY

7th & 8th – Saturday & Sunday
Remount Ride
 Jerry & Diane Shriner
 Please [RSVP](#) to 208-667-2949 or jerryshriner@gmail.com

8th – Sunday
 Kootenai County Sheriff's Mounted Posse Mother's Day Ride
 Farragut Park 9:00 am to 1:00pm. Spaghetti Dinner to follow.
 Contact Barbara K. McClure, 208-772-6662

14th – Sunday
 Inland Empire Poker Ride at Fish Trap Lake
 First rider out at 9AM. Info call Ken Carmichael at 509-466-2225
 or kcarmichael2225@gmail.com

20th -22nd – Friday –Sunday
 Wild Horse & Burro Adoptions @ Klamath Falls, OR

21st – Saturday – Regular Meeting
Socializing 6:30 • Meeting 7:00

Date TBA
 Inland Empire Mustang Horse Club Ride

Date TBA
Marie Creek Trail Clearing
 Trail Boss Les Ericson

Memorial Weekend Work Project
[SUGGESTIONS NEEDED](#)

JUNE

4th – Saturday
National Trails Day Work Project
 Hitching rail @ English Pt
[TRAIL BOSS NEEDED](#)

11th– Sunday
 Wild Horse & Burro Adoptions @ Ellensburg , ID

12th – 17th – Sunday – Friday
 Gentlemen on Horseback

JUNE (continued)

15th – Wednesday – Regular Meeting
Socializing 6:30 • Meeting 7:00

25th – Saturday
4th of July Rec. Area Fun Ride
 Trail Boss Joni Lueck – 208-659-9066

PRVBCH Annual Poker Ride @ At Pee Wee Creek Trailhead

JULY

16th–17th – Saturday & Sunday
St Joe Work Project at Red Ives
 Trail Boss Jim & Karen Kimball – 208-772-2434

BCHI State Director Meeting

PRVBCH Competitive Trail Challenge @ Pee Wee Creek Trailhead

20th – Wednesday – Regular Meeting
ANNUAL POT LUCK – 6:00 in the Park

22nd -24th– Friday –Sunday
 Wild Horse & Burro Adoptions, Wild Trails Horse Expo, Powell Butte, OR

23rd -24th– Saturday & Sunday
 Ride The West Horse & Ranch Expo
 Four Mound Prairie Bison Ranch • 7 Mile Area, Spokane, WA

AUGUST

14th - 20th, Sunday - Saturday
 BCHI Sawtooth Wilderness Pack Clinic

17th – Wednesday – Regular Meeting
Socializing 6:30 • Meeting 7:00

Aug. 26-Sept. 5
 Wild Horse & Burro Adoptions @ Oregon State Fair, Salem, OR

SEPTEMBER

10th – Saturday
FUNDRAISER– Open to Public
 Farragut State Park
 LNT Training • De-Spooking Clinic
 Trail Obstacles • Packing Training • Trail Ride

17th – Saturday – Regular Meeting
Socializing 6:30 • Meeting 7:00

OCTOBER

15th – Saturday – Regular Meeting
Socializing 6:30 • Meeting 7:00

NOVEMBER

BCHI State Director Meeting

19th – Saturday – Regular Meeting
Socializing 6:30 • Meeting 7:00

DECEMBER

3rd – Saturday
Christmas Party

TUNE-UP CLINIC

Saturday, April 9th

The tune up clinic for our horses will be on the 9th of April. Bob Williams will be trail bossing this event. Vet services will be provided by McKinlay & Peters Equine Veterinary Service, starting at 8:00 a.m. All horses must be checked in by 10:30 a.m. When you arrive, make sure you sign up with me; horses will be seen in the order that you have signed up. If you need a Brand Inspection, let Bob know so we can try to get the inspector there.

LOCATION: Red Top Stables, 11875 W Manitoba Ct, Post Falls, ID 83854 (208) 777-7958. On Idaho Rd in Post Falls, go 1/4 mi North of Hayden Ave, there will be a Red Top Arena sign on the left, turn on Manitoba and drive on a dirt road about 1/4 mile to arena.

THIS IS A MEMBERS ONLY EVENT

We will have Gina Saathoff's Breakfast Burritos for sell and free coffee. The costs are as follows:

6 month coggins/health certificate = \$40.50 (**Brand ID REQUIRED**)
 5-way (eastern and western encephalitis, tetanus, influenza and rhino) = \$29
 4-way (eastern and western encephalitis, tetanus, and influenza) = \$ 21
 3-way with WNV (eastern and western encephalitis, tetanus) = \$28
 Intranasal strangles = \$27 • Intranasal Influenza = \$21
 Flu / Rhino = \$25 • WNV = \$25 • Tetanus = \$11
 Sheath Cleaning = \$28 (plus sedation if not already sedated)
 Floats with sedation \$175



RSVP by Monday April 4th

Contact Bob Williams at (509) 280-7796 or leawilliams65@yahoo.com.

If you don't RSVP we cannot guarantee you will receive the shots you need.

**WHEN YOU
RSVP
IT MEAN'S THAT YOU'LL BE THERE !!!!!**

FUNDRAISER

September 10th – Farragut State Park – Open to Public

LNT Training • De-Spooking Clinic • Trail Obstacles • Packing Demo • Trail Ride
 Trailer/Break Inspections • Horse 1st Aid • Mounted Shooting Demo • Silent Auction

Solicitations for the gift baskets for the silent auction is under way. See pages 6 & 7 for letters to take to get donations. Please let Lea Williams @ 509-244-9447 know who you saw. If you can help out in anyway.... Directing traffic, assist with lunch, assisting trainers, making baskets, selling tickets, ANYTHING.....

Please contact Bob Williams @ 509-280-7796 or Karen Kimball @ 208-772-2434.

The more we plan the more we make!

Public Lands Liaison Report

By Jerry Shriner

The question of a bill that would classify equine not used for production as companion animals came up at the most recent PBCH meeting. The bill is H 0149. It has gone to printing and been referred to the House Agricultural Affairs committee. The committee has not yet received the bill thus it is not on their agenda now but probably will be. I have written the committee chair (representing myself not PBCH) advising him that recreational equine users are concerned that unreasonable care standards could be applied if equine are looked at in the same light as cats, birds and dogs.

The BLM is developing a recreational area in Blue Cr Bay known as the Wallace Forest Conservation Area. It will have/has a trailhead suitable for horse trailers and 3 to 5 miles of trails open to horse use. The trails will probably connect to some old logging roads or trails that are not part of the project.

According to Randy Doman, member of the Parks & Recreation Board, he does not believe there is any policy decision related to elimination of equine use signage on State managed trails but he will check into it.

Dept of Interior Secretary Salazar's "Wild Lands" program directs the BLM to study its lands for wilderness characteristics and to manage selected lands for these characteristics. Three areas in NI are considered to be in this category. An area in the Selkirk mountains, Grandfather-Grandmother mountains area and the Rochet-LaTour creek area. This essentially means maintaining management to historic standards.

Senator Crapo's office is adamant about budget cutting so his office needs to hear from people who are concerned about trail maintenance and public land management in our area. For example much of the money for fire mitigation work is headed south to the Great Basin where it is thought the need is greater.

The proposed M3/BLM land exchange has been denied by the BLM. The proposed Lochsa is ongoing but faces opposition from Idaho and Clearwater counties because it takes private property off the tax roles. Latah county, on the other hand would gain

The Remount Ride May 7-8, 2011



The remount ride is a ride we have done for the past several years. It is a fairly early ride and the weather is usually good; but I don't make guarantees. We ride on Kootenai-Salish Tribal land from an old remount station. It's mostly open grass/sagebrush land. There is good parking for rigs, water for horses and several corrals. Also some good areas to put up an electric fence or hi-line. Bring stock feed. We ride Sat and Sun and there are many places to ride on a variety of terrain.

Diane & I will be there Fri before noon. People are welcome to come whenever. We will fix breakfast for everyone Sat and Sun mornings and just charge for the actual cost which has been about \$5 per breakfast in the past. Lunch is on your own and supper is the usual potluck and bring your own entree. Kids are encouraged and dogs allowed except in the kitchen and dining room.

Directions: Take I-90 to the St Regis exit. You will be on Hwy 135 headed down the Clark-Fork River toward Hwy 200. Continue about 22 miles to the junction of 135 and 200. Turn right/east and go about 10 miles to Perma. Don't blink. It is only about two buildings. Turn North on Hwy 382 across the bridge over the Flathead River and immediately turn east onto the gravel road headed up river. Go about two miles to the remount station-a bunch of old buildings and corrals. You can't miss it. These directions work best for most Idaho residents.

You must have a tribal conservation permit and camping stamp for each person 18 yrs and older. You can buy them at Plains, but it is easy to get them on line and you have plenty of time if you start now. Tribal officials will be checking so don't think you can slip through. Plains is a few miles west on Hwy 200 so if you want to buy that way turn west at the 135/200 junction to Plains and stop at the first place you come to. To get the permit on line go to <https://app.mt.gov/Als/Index> click the item that pertains to you. This will take you to the ALS number page. If you have had any kind of license or permit from the Mt F & G you will have an ALS number and you can search for it from this page. If not, just follow the directions and get one. Click submit and you should be at <https://app.mt.gov/Als/>. Scroll down to the CSKT Tribal license section and choose either the 1 year for \$15.00 or the out of state 3 day for \$8.00. The camping stamp can be purchased at the same time as the conservation permit. It is the first item in the CSKT section of the online licensing page. Proceed to the check out and you will get your permit in the mail. Print your receipt in case there is a problem.



Note: If you have already bought your conservation permit you only need to go back and buy the camping stamp in the same manner. MT F&G will send you a new form showing you have both the permit and the stamp. It really isn't a stamp, it's just another text line that says Flathead camping stamp.

Please RSVP to Jerry Shriner jerryshriner@gmail.com no later than 4/26/2011 to give us time to plan and buy the breakfast groceries.



PANHANDLE BACK COUNTRY HORSEMEN, INC.

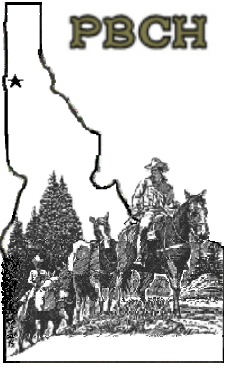
P. O. Box 1903 • Hayden, ID 83835

MISSION STATEMENT

The Back Country Horsemen is a national organization dedicated to these main objectives:

1. To perpetuate the common sense, use and enjoyment of horses in America's back country and wilderness.
2. To work to insure that public land remains open to recreational stock use.
3. To assist the various government and private agencies in their maintenance and management of said resources.
4. To educate, encourage and solicit active participation in the wise and sustaining use of the back country resources by horsemen and the general public.
5. To foster and encourage the formation of new State Back Country Horsemen organizations.

In meeting the goals of our mission statements, Back Country Horsemen in the state of Idaho have spent thousands of volunteer hours on trails, trail heads, campsite maintenance and construction. We have established education chairs in each chapter in Idaho who work to bring the messages of low impact and "Leave No Trace" techniques to both members and the general public. This fund raiser will help us continue on with this mission.



McKinlay & Peters Equine Hospital



Presents our 4th Annual Fundraiser

Benefitting

Panhandle Badk Country Horsemen

"Spooky to Smart Clinic"

September 10, 2011 @ Farragut State Park

Sponsorship Information Sheet 2011

Business Name _____

Contact Name _____

Address _____

City _____ State _____ Zip _____

Phone# _____ Fax# _____

Email Address _____

Cash amount or merchandise donation _____

Receipt

Business Name _____

Cash amount or merchandise donation _____

Received by _____ Date _____

Please Return to: David Rousher 208-667-7452 PO Box 1903 Hayden, ID 83835

Thank You for your support!

Chainsaw Maintenance Clinic

We had a nice turnout for the Chainsaw Maintenance Clinic on March 19th with 23 people. It was inside the shop with a nice fire going and a couple coffee pots on. Some people brought their own saws for Bob to check over. We had the club saws and several of Bob's saws to work on. Bob went over the maintenance of a saw and how to sharpen, file a chain and a lot of helpful information. Thanks to everyone for coming.

Linda Funke



Bob Funke demonstrates one of the many aspects of maintaining a chainsaw.



Even the gals looked on. Here are Joyce Bissell and Kay Bradley. You can see Sandy Beamer seated in the center of the top photo.



Inland Empire Back Country Horsemen Poker Ride at Fishtrap Lake May 14th – This is the 17th year for this popular ride on beautiful BLM land west of Spokane. Enjoy riding with friends, door prizes and playing poker hands.

Riverside State Park Open House – Experience Riverside State Park Your Recreation Destination – May 15th – This is an opportunity for the public to learn more about this 8900 acre park, with 7 equestrian trailheads, in close proximity to Spokane providing excellent equestrian opportunity.

Gentlemen on Horseback ride June 12th to 17th – This ride started in 1948 and is open to all “gentlemen” of any age for all or a part of the week. For more information see www.gentlemenonhorseback.com.

For more information about the events, you may contact Ken Carmichael at 509-466-2225 or kcarmichael2225@gmail.com or visit our website www.iebch.com.



It's time for the next Trail Savers column for Trail Blazer magazine. Trail Savers is the chance to shine the spotlight on your organization. Have you been working with officials regarding horse trails in your area? Held workdays for your trails systems? News about your local trails? Share this information with your fellow trail organizations and readers of Trail Blazer magazine, a national trail riding publication.

Also we are accepting nominations of those in your organization who are your champions of the trail - the Trail Warrior! We feature a story and a photo of that person (or sometimes persons) in each issue of Trail Blazer. The Trail Warrior honoree also receives a one-year subscription of the magazine. Send your information in on why this person should be named Trail Warrior in the magazine (about 300 words, doesn't need to be a complete article, just information of why this person deserves this honor) and a high resolution, clear photo of that person. We are seeking nominations through out the year, so send those in ASAP!

Terri R. Folks
Trail Advocacy Editor
Trail Blazer Magazine
www.trailblazermagazine.us

Voice/Fax 405-340-6912
On-line Associate Editor
Trail Town USA
www.trailtownusa.com
terri@trailtownusa.net



You can have your say on the future of outdoor recreation in Idaho

The Idaho Department of Parks and Recreation (IDPR) wants your opinion about outdoor recreation in Idaho. Are recreation opportunities increasing? Are fees charged for camping competitive? Is solitude still easy to find in Idaho?

Comment on outdoor recreation issues already identified, or post issues of your own at www.idahorecreationfutures.org. IDPR Planning Chief Rick Just says this is an idea generator, not a survey. Often if your address wasn't randomly selected, you didn't get to participate in a survey. This time, everyone can participate. We want to know what's important to you.

IDPR wants to hear about recreation issues everywhere in the state, not just in state parks. The agency produces the Statewide Comprehensive Outdoor Recreation and Tourism Plan (SCORTP) every five years for all recreation providers, public, private, local, state and federal. The plan ranks issues and opportunities identified by citizens, and IDPR adjusts its criteria for Land and Water Conservation Fund (LWCF) grants in order to help meet those needs.

The Idaho Recreation Futures site is one method IDPR is using this year to stay in touch with citizen needs.

BLM Seeks Private Sector Partners for Eco-Sanctuary Development

by: Pat Raia
March 16 2011 Article # 17939

The Bureau of Land Management (BLM) is seeking proposals from private-sector individuals and organizations interested in developing sanctuaries for wild mustangs and burros currently residing in agency managed long-term holding facilities. The proposal solicitation is part of a new management strategy plan unveiled by agency director Bob Abbey last month, said BLM Spokesman Tom Gorey.

The [reform plan](#) also calls for a reduction in the number of wild horses removed from their ranges and an increase in the number of mares treated with the contraceptive porcine zona pellucida (PZP).

Gorey said the eco-sanctuary development program is intended to provide an alternative to the long-term holding of animals removed from their ranges. Under the program, individual land owners, Indian tribes, and state and local governments can submit proposals for eco-sanctuary development. The sanctuaries would sustain at least 200 animals and must be designed to provide a variety of public access opportunities.

"It's not a cookie-cutter kind of thing," Gorey said. "There are all sorts of possibilities including training horses and adoption programs, tourism, and education."

Under the program, state sanctuary plans such as the [one proposed last year](#) by former New Mexico Gov. Bill Richardson could qualify for consideration, Gorey said.

In September 2010 Richardson sought to use \$2.8 million in funds awarded to the state under the American Recovery and Reinvestment Act of 2009--the so-called stimulus bill--to purchase the 12,142-acre Ortiz Mountain Ranch from the Nature Conservancy, an international land conservation organization, and a private owner. The purchase would have expanded the Cerrillos Hills State Park to create a wild mustang sanctuary and ecotourism destination in that state. The plan was later stalled when the revenue set aside to develop the sanctuary was instead be used to offset state budget shortfalls.

However, a [plan proposed by wild horse advocate Madeline Pickens](#) to create a mustang sanctuary located on a combination of private and BLM-managed lands would not qualify for consideration under the current solicitation, Gorey said.

"That will be covered in another solicitation," Gorey said.

Some wild horse advocates have long called on the BLM to reduce or eliminate mustang gathers, and to develop alternatives for placing animals in long-term holding facilities. Karen Sussman, president of the International Society for the Protection of Mustangs and Burros, believes the range is the best place for mustangs to reside, but she thinks well-managed sanctuaries could represent a good alternative to long-term holding.

"I think the horses should be in the care of those who truly honor and care for them," Sussman said. "They will do much better."

Those interested in learning more about the proposal solicitation should visit www.grants.gov. Proposals must be submitted by May 14.

"We hope we get some creative possibilities," Gorey said.



Readers are cautioned to seek the advice of a qualified veterinarian before proceeding with any diagnosis, treatment, or therapy.

Copyright © 2010 BLOOD-HORSE PUBLICATIONS. All rights reserved. Reproduction in whole or in part in any form or medium without written permission of BLOOD-HORSE PUBLICATIONS is prohibited. THE HORSE, THE HORSE logo, THEHORSE.COM and THEHORSE.COM logo are trademarks of BLOOD-HORSE PUBLICATIONS.



NINEMILE WILDLANDS TRAINING CENTER

USDA Forest Service

*Linking the past to the future by
teaching traditional
back country skills*

Lolo National Forest
Ninemile Ranger Station
20325 Remount Road, Huson, MT 59846



2011 Course Schedule

Course Name	Date	Tuition
Introduction to Shop Tools for Cabinet, Window & Door Construction/Lead Awareness Training Missoula, MT	March 7 - 10 March 14 - 17	\$250 \$250
Crosscut Saw Maintenance and Sharpening	April 4 - 8	\$475
Crosscut Saw Maintenance and Sharpening	April 11 - 15	\$475
Crosscut Saw Maintenance and Sharpening	April 18 - 22	\$475
NEW Leave No Trace Master Educator (Stock) <i>(Front Country), Carbondale, Illinois</i>	April 11 - 15	\$650
Firearms Safety for Packers & Stock Managers <i>(Agency personnel only)</i> Missoula, MT	April 27	\$125
Dutch Oven Basics	May 7	\$125*
Dutch Oven Basics <i>(Couples rate)</i>	May 15	\$125* \$200*
Advanced Dutch Oven Cooking <i>(Couples rate)</i>	May 8	\$125* \$200*
Leave No Trace Master Educator (Stock)	May 9 - 13	\$650
NEW Basic Horsemanship	May 16 - 17	\$200
Horse Handling & Training Techniques	May 18 - 20	\$300
Defensive Horse Safety	May 23	\$75
Defensive Horse Safety	June 6	\$75
Ninemile Packing Clinic	May 23 - 27	\$450
Ninemile Packing Clinic	June 6 - 10	\$450

Continued on next page.

2011 Course Schedule

NEW Log Repair & Replacement for Historic Buildings (Greenwood Cabin - Ninemile Ranger District)	June 12 - 17	\$400
NEW Putting the Building to Bed (Mothballing Techniques) (West Yellowstone)	June 27 - 30	\$400
Wood Shingle and Shake Roofing Techniques (Powell Ranger Station)	July 11 - 15	\$400
Back Country Packing, Camping & Stock Handling Techniques	July 31 - August 5	\$900**
Log Repair and Replacement for Historic Buildings Log Repair and Replacement for Historic Buildings (Lewis and Clark)	August 15 - 18 August 22 - 25	\$400 \$400
Back Country Survival Techniques	September 2 - 4	\$250
Practical Map, Compass & GPS	September 4 - 6	\$250
Combined Course - Back Country Survival Techniques/Practical Map, Compass & GPS	September 2 - 6	\$450***

* Dutch Oven Courses include three meals.

** Must bring your own stock, unless arrangements have been made otherwise. (Government stock limited - extra charge of \$100)

*** Discount given if both Back Country Survival Techniques & Practical Map, Compass & GPS are taken.

Ninemile Wildlands Training Center is a program of the USDA Forest Service located on the Lolo National Forest in west central Montana. All courses are open to the public as well as agency personnel.

Please call 406-626-5201 for more information.
www.fs.fed.us/r1/lolo/resources-cultural/nwtc

America's Favorite Trail Horse



Any horse can win!

Audition for your share of \$100,000 in Cash & Prizes!

There will be a minimum of 10 National Cash Winners and **ONE** Favorite!

Attend an Audition Near You • April 9-24, 2011

Alabama

Southern Cross Ranch
Headland, AL 4/19

Arizona

Triangle T Guest Ranch
Tucson, AZ 4/10

California

Running I Ranch
Dunnigan, CA 4/12

Flag Is Up Farms

Compliments of Monty Roberts!
Solvang, CA 4/9

Hidden Valley Wildlife Area
Norco, CA 4/16

Colorado

Anderson Acres
Keenesburg, CO 4/9

Colorado State Fair
Pueblo, CO 4/10

Florida

Peninsula Farms
Ocala, FL 4/23

Idaho

Red Top Stables
Post Falls, ID 4/11

Indiana

Hoosier Horse Park
Franklin, IN 4/18

Massachusetts

Camp Marshall
Spencer, MA 4/17

Mississippi

Golden Pines Equestrian Center
Perkinston, MS 4/10

Missouri

Fischer Stables, LLC
Sedalia, MO 4/16

New Mexico

4 Winds Equestrian Center
Estancia, NM 4/23

New York

The Hill Top Ranch
Jamesville, NY 4/23

North Carolina

Wild Winds Farms
Durham, NC 4/23

Oregon

Skyhawk Ranch
Redmond, OR 4/9

Tennessee

McPherson Quarter Horse Arena
Bristol, TN 4/9

Texas

SF Ranch
Comanche, TX 4/23

The Reserve at Lake Travis
Austin, TX 4/23

7IL Trails
Cat Spring, TX 4/16

Virginia

Saddle Creek Farm
Palmyra, VA 4/16

Wisconsin

Unbridled Faith Farm
Blanchardville, WI 4/18

National Finals May 8-12, 2011

100 Horse & Rider Teams will be selected to travel to Austin, TX for a FUN filled week of Competitive Trail Challenges & Clinics from the Nation's Top Clinicians!

America's Favorite Trail Horse will broadcast on  and National TV! Auditions are limited and going **FAST!** Visit www.ACTHA.us for more information!

ACTHA

AMERICAN COMPETITIVE TRAIL HORSE ASSOCIATION

IDAHO HORSE COUNCIL PRESENTS THE 25TH ANNUAL
IDAHO HORSE EXPO 2011

APRIL 15, 16 & 17

Friday 10-9 · Saturday 9-9 · Sunday 9-6
 at the Idaho Horse Park, Nampa Idaho



*Celebrating
 Silver*

- Stallions on Parade
- Round Pen Challenge
- Private Treaty Horse Sale
- Equine Seminars
- Vendors from around the Northwest
- Stick Horse Races
- Youth Activities
- Breed Challenge (Friday)
- Ranch Sorting (Saturday)
- Supreme Cowboy Race (Sunday)

Sponsored by Miss Rodeo Idaho

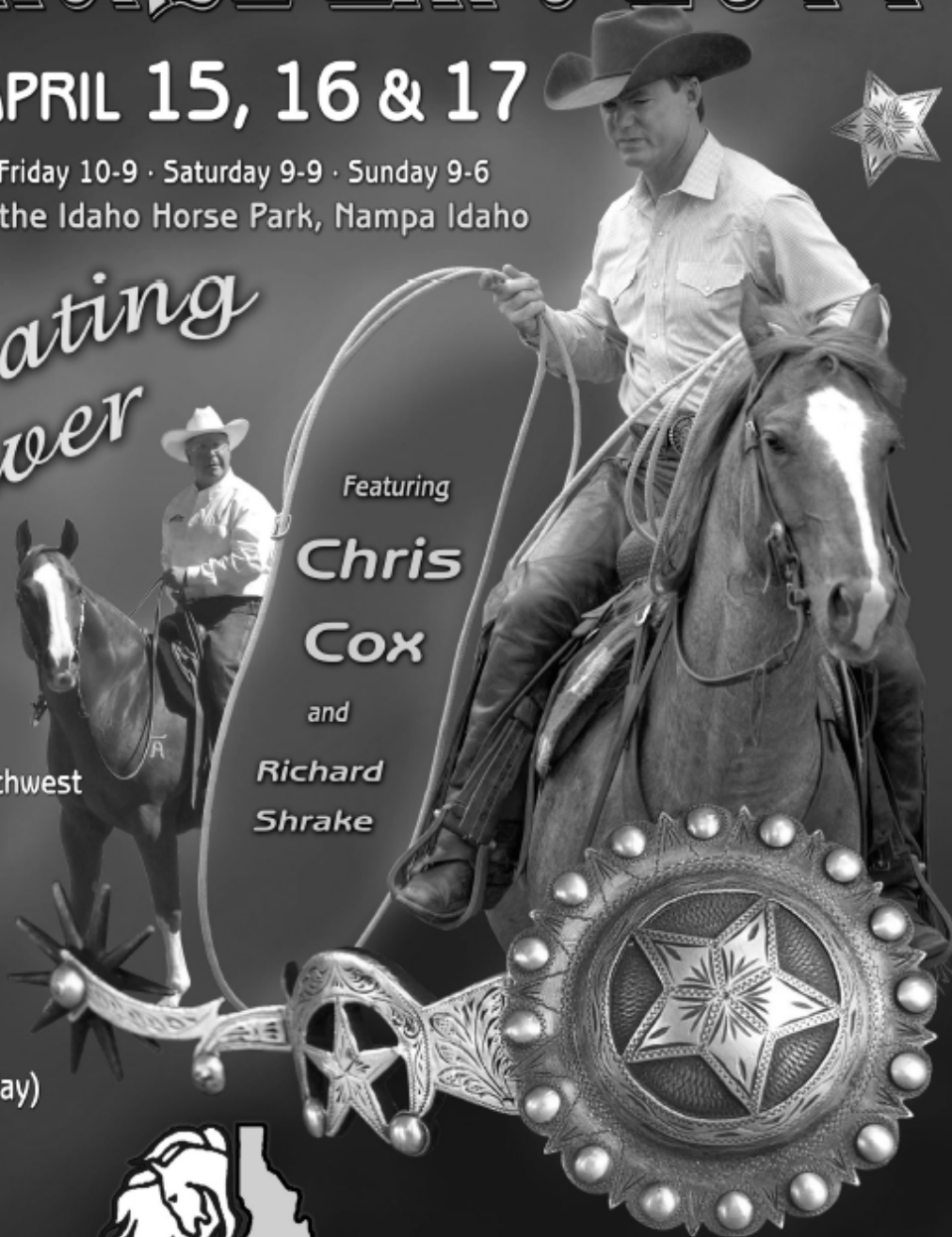
Clinics & Demonstrations

by Local Clinicians

Jeff Spencer, Dee Craig,

Alice Trindle, Shannon Allison

and Randi McCallum



Featuring

**Chris
 Cox**

and

**Richard
 Shrake**



Idaho Horse Council

www.idahohorsecouncil.com

1-208-465-5477

idahorse@juno.com



CLASSIFIED ADS

FOR SALE!

The Ranch at Mica Meadows



Just listed, a turn-key horse boarding facility called the Ranch at Mica Meadows and I'm trying to get the word out to the local horse world! I'd love to see this sold to someone locally that would keep it open to the public and market local clinics. It's bank owned and priced very aggressively for immediate sale! Please pass this on to anyone you know that has horse contacts. It's a great opportunity for a turn-key facility at rock bottom pricing! All the information and tons of photos are available at

<http://www.flexmls.com/link.html?u64n1sapq3d,7,1>.

Give me a call if you have any questions.

Katie Bane, ABR, CRS, GRI
Century 21 Beutler & Associates
 1836 Northwest Blvd.
 CDA, ID 83814
katie@ktbane.com
 208-661-6753

<http://www.KTBane.com>

Color Laser Printing/Coping

20# White Bond or your stock –
 20¢ per side {49¢ at Kinko's}
 Debbie Samovar • 208-245-3041
dsamovar@gmail.com

Registered Quarter Horse

Gelding, bay color, 19 years old. Well broke.
 Good trail horse. Good with children.
 \$800.00 obo
 Laura • 208-660-2564.

Pasture/boarding

for 1 horse between CDA and Sandpoint. Room to ride in the area. \$100 per month supply your own hay for the winter.
 Sandy Beamer • 208-660-4240

WANTED

Roommate with a horse. Private room and bathroom, share large house. Supply your own hay for the winter. Between CDA and Sandpoint.
 Sandy Beamer • 208-660-4240



Stone Necklaces

Jaspers, Agates, Quartz, Semi-Precious Stones
 28" - 36" – \$15 to \$25
 Debbie Samovar • 208-245-3041



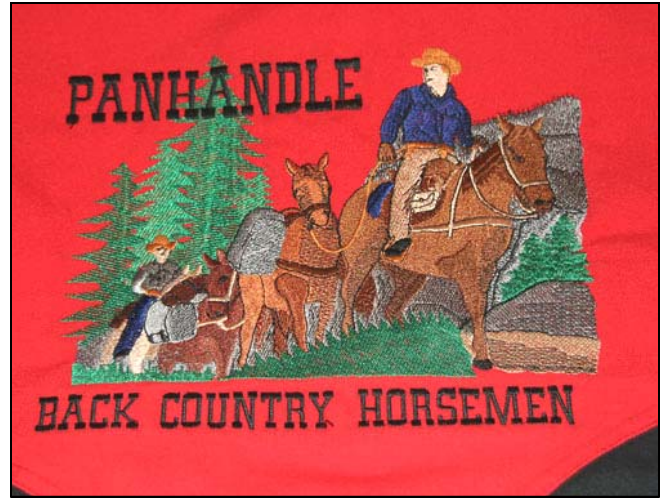
We still have
2011 CALENDARS
 to sell!

Contact Angela Parsons
 208-640-3105
 to get yours.

Suggestion:
 Promote them as a
 Raffle Ticket with
 a FREE Calendar!

2011 WINNERS

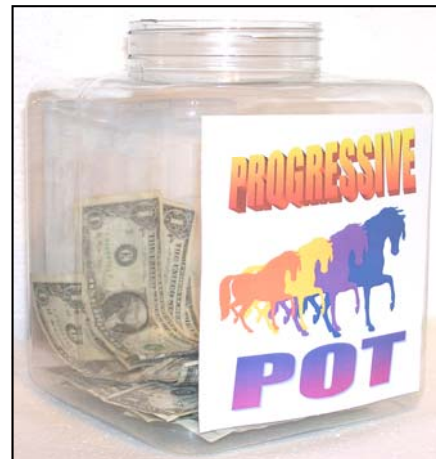
- January – Sandy Mader, Keuterville, ID
- February – Janice Shepherd, Buhl, ID
- March –
- April –
- May –
- June –
- July –
- August –
- September –
- October –
- November –
- Grand Prize Winner –**




**INTERESTED IN A JACKET
 WITH THE CLUB LOGO ON IT?**

Contact
 Monogram Plus
 208-667-3186

**\$ \$ PROGRESSIVE
 50/50 POT \$ \$**




There was no drawing
 for the March
 Progressive Pot of
\$25
 Which rolls over to APRIL.



Deborah Samovar
Midnight Graphics

*Specializing in Newsletters, Business Materials
 & Print Production*

9176 E Soaring Hawk Lane • Saint Maries, ID • 83861
 208-245-3041 • dsamovar@hughes.net



470 Kathleen Avenue
 Coeur d'Alene, ID 83815
 EMAIL-sales@parkertoyota.com
 URL-www.parkertoyota.com

(208) 765-8228
 Spokane Toll Free **624-6591**



Krista Porter DVM
Veterinary Chiropractic

208.651.0973 • kporterdm@yahoo.com



CENTURY 21
Beutler & Associates
 1836 Northwest Blvd.
 Coeur d'Alene, Idaho 83814
Cell (208) 661-6753
 Toll Free (800) 786-4555
 Fax (208) 415-0801

Katie Bane, GRI, ABR®
 REALTOR®
 realestate@icehouse.net



Each Office Is Independently Owned And Operated



Linscott Law Firm, PLLC

1423 N. Government Way
 Coeur d'Alene, ID 83814
 Office: 208-665-7270
 Fax: 208-665-7590
 Cell: 208-660-1415
 linscotta@gmail.com

April M. Linscott
 Attorney at Law



Idaho State Police

Julie Schwanz
 Deputy Brand Inspector
 Lewiston District
 Idaho Brand Board

PO Box 605
 St. Maries, ID 83681
 Cell 208-582-0899
 Website: www.isp.state.id.us/brands

DAVE LOGUE President JONI LUECK Vice-President



FAA Repair Station #LOGR640X
Specializing In Fiberglass Aircraft Parts
 email: selkirkav@selkirk-aviation.com
 www.selkirk-aviation.com

(208) 664-9589 3377 W. Industrial Loop
 Voice Mail 1-800-891-7687 Coeur d'Alene, ID 83815

208-457-8813 509-238-4959
 13802 W Prairie 5022 E Ballard Rd
 Post Falls, ID 83854 Colbert, WA 99005

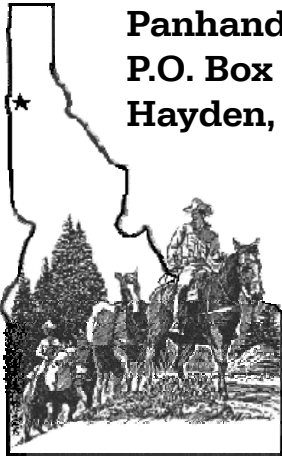


www.McKinlayPetersEquine.com

Panhandle Back Country Horsemen

P.O. Box 1903

Hayden, ID 83835



Monthly meetings are on the 3rd

SATURDAY

of the month

Held in the Dalton Gardens City Hall.

Ya can hitch yer hoss at
6360 North Fourth St,
Dalton Gardens, ID



Next meetin'

Saturday
APRIL
16th

Socializing - 6:30
Meeting - 7:00

Enjoy some friendly conversation,
hot coffee and snacks.

Heck fire... You might even win
The Progressive Pot!



Sure would like to see ya thar...

Ol' Festus & the crew.

Thanks to all of our members for supporting Panhandle Back Country Horsemen. We couldn't do it without **YOU!**

APRIL

9th – Saturday
Tune-Up Clinic
Trail Boss Bob Williams

509-280-7796

RSVP by Monday

April 4th

11th – Monday
America's Favorite
Trail Horse Auditions
Red Top Stables, Post Falls, ID

15th - 17th – Friday & Sunday
Idaho Horse Expo April
Idaho Horse Park, Nampa, ID

16th – Saturday
Regular Meeting
Socializing 6:30
Meeting 7:00

30th – Saturday
Cenex Treasure Hunt
Farragut Park • 8:30AM Start

PANHANDLE BACK COUNTRY HORSEMEN CONTACTS

President:	Bob Williams	509-280-7796
Vice-President:	Angela Parsons	208-604-3105
Treasure:	David Rousher	208-667-7452
Secretary:	Debbie Samovar	208-245-3041
Newsletter:	Debbie Samovar	dsamovar@gmail.com
Web Wrangler:	High Desert Design	hdd430@gmail.com
Web Site:	www.pbch.org	